

CERTIFICATE OF LOCATION OF GOVERNMENT CORNER

EAST QUARTER Corner of Section 5, Township 106, Range 39, 5TH P.M.

STATE OF MINNESOTA, County of MURRAY

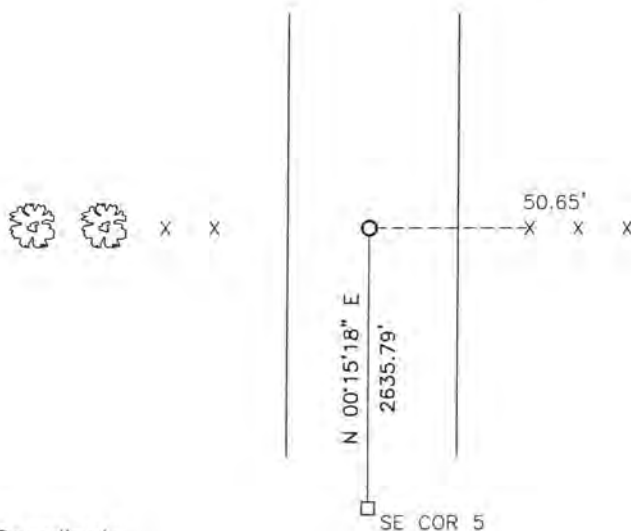
At the corner location shown on the sketch:

On 11/9/16 found a PK nail

left monument as found, lowered monument, removed monument (explain)

On _____ placed a _____

SKETCH OF REFERENCE TIES



Minnesota State Plane Coordinate
System Murray County Datum
NAD83 (1996)

N: 161026.550
E: 558866.971

Nail and survey marker in end fence post East 50.65'

Statement of evidence relative to this corner location is on back of page.

I hereby certify that this document and the data contained herein was prepared by me or under my direct supervision.

[Signature] 1/30/17
SIGNATURE DATE

Registration No. 43844

- Land Surveyor, Professional Engineer
- County Surveyor, County Engineer

OFFICE OF THE COUNTY RECORDER
County of MURRAY

I hereby certify that this document was filed in the Co. Recorders office at 9:00 A.M on the 17TH day of FEBRUARY A.D. 2017

County Recorder Greelyn C. Larson

By _____, Deputy

DOCUMENT NO. _____

Statement of Evidence

In 1861, Willman and Smoot did the original subdivision of the township.

On June 6, 1895, B.W. Woolstencroft recorded a stake mound and pit at the corner.

On August 29, 1986, the Murray County Highway Department found a field stone at the corner.

On July 12, 2006, Zieske Land Surveying found a PK nail set by the Murray County Highway Department at the corner.

On November 9, 2016, Bueltel-Moseng Land Surveying found a PK nail by using Murray County Highway Department coordinates.